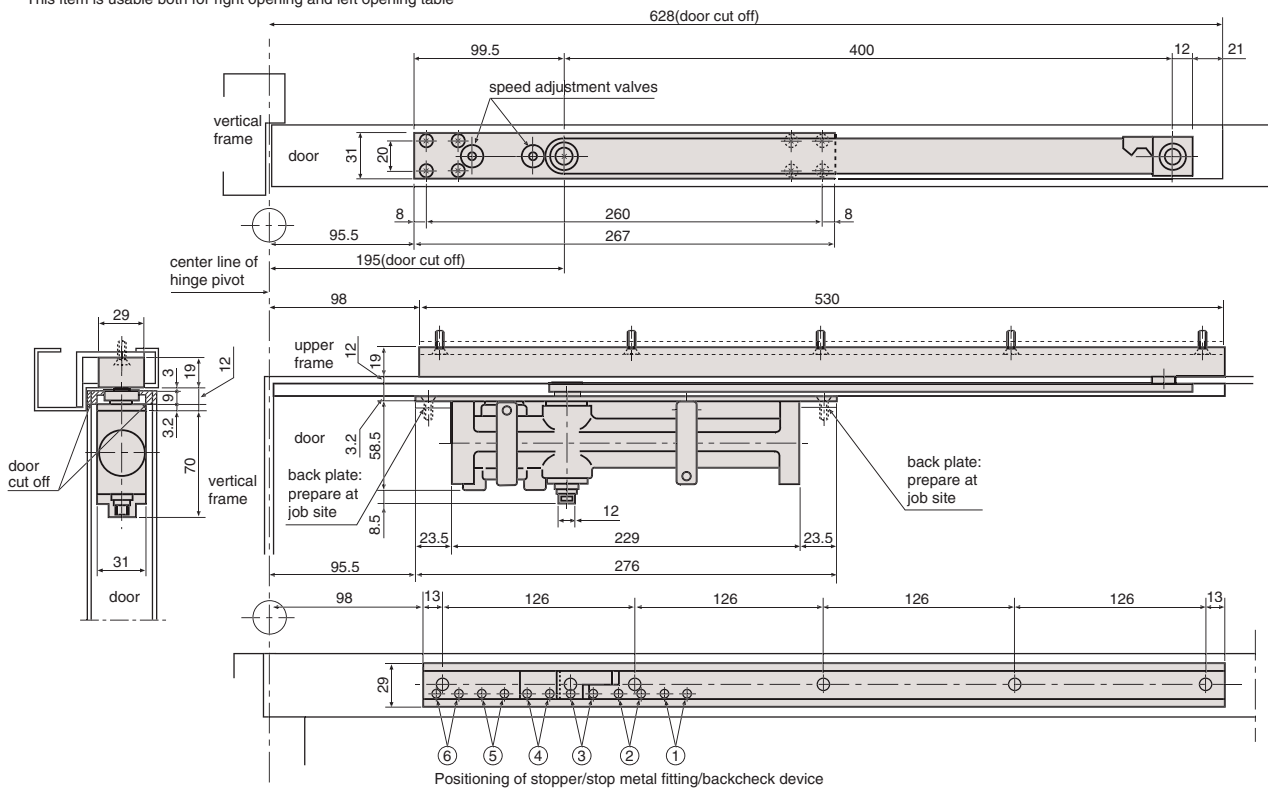


CONCEALED DOOR CLOSERS RYOBI CO-50

Drawing for CO-52

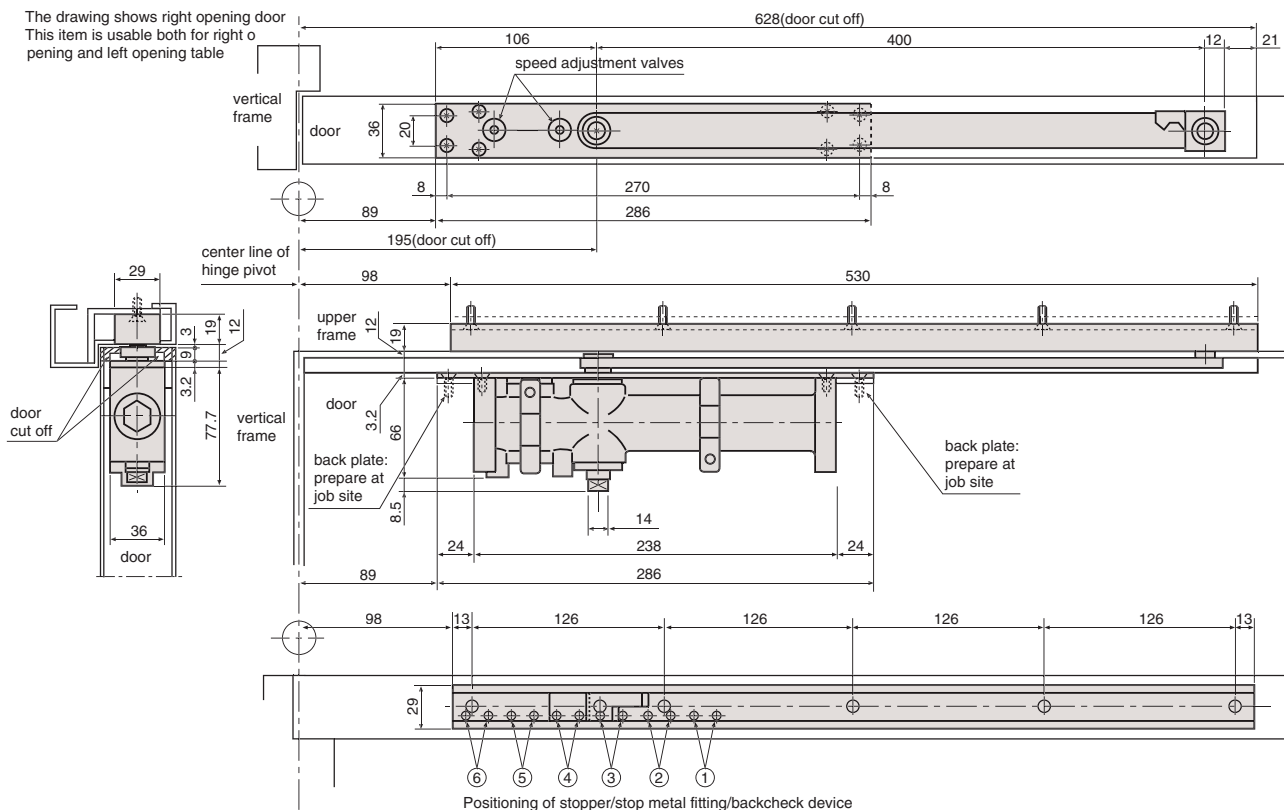
The drawing shows right opening door
This item is usable both for right opening and left opening table



Installation position	Angle of door stop / hold open / backcheck					
	①	②	③	④	⑤	⑥
180° opening	100°	110°	120°	130°	150°	180°

Drawing for CO-53,54

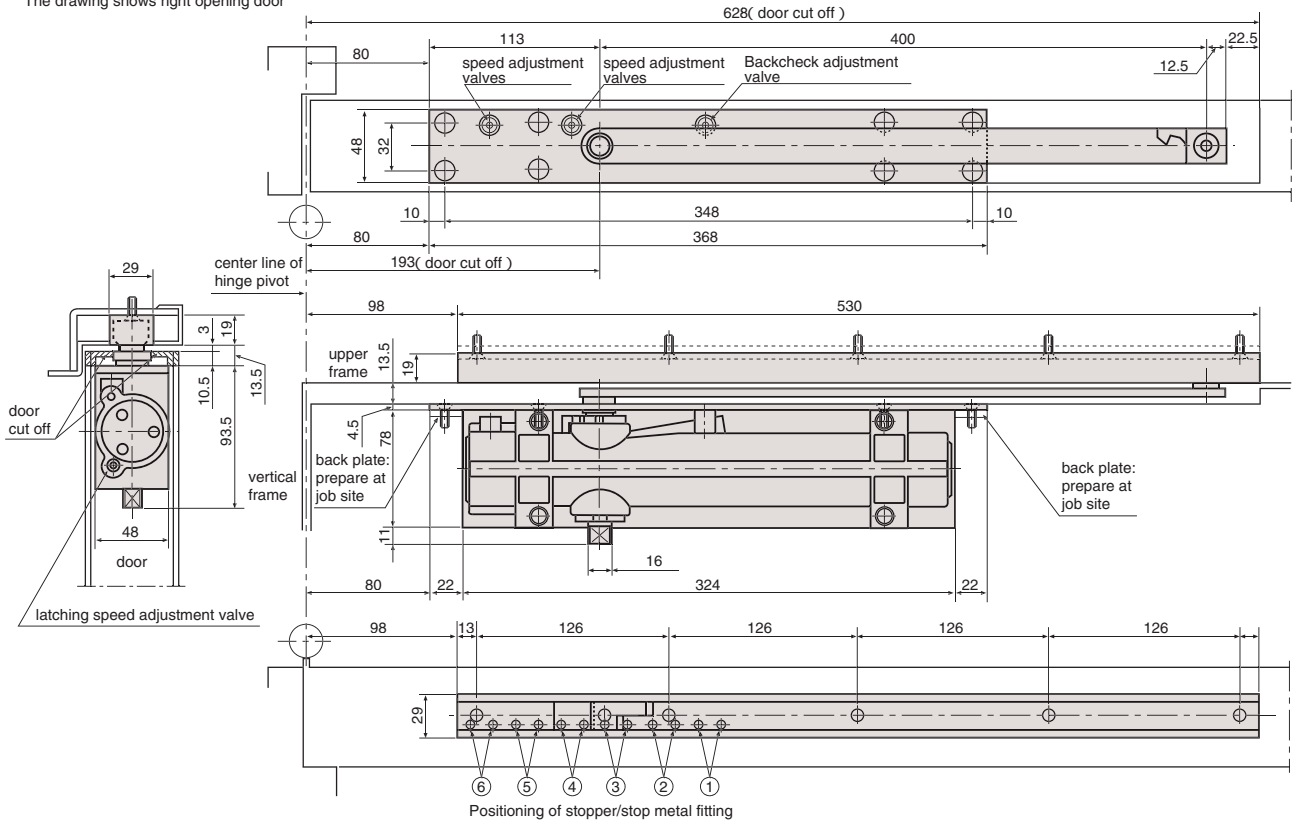
The drawing shows right opening door
This item is usable both for right opening and left opening table



Installation position	Angle of door stop / hold open / backcheck					
	①	②	③	④	⑤	⑥
180° opening	95°	105°	115°	125°	142°	180°

Drawing for CO-55, 56

The drawing shows right opening door

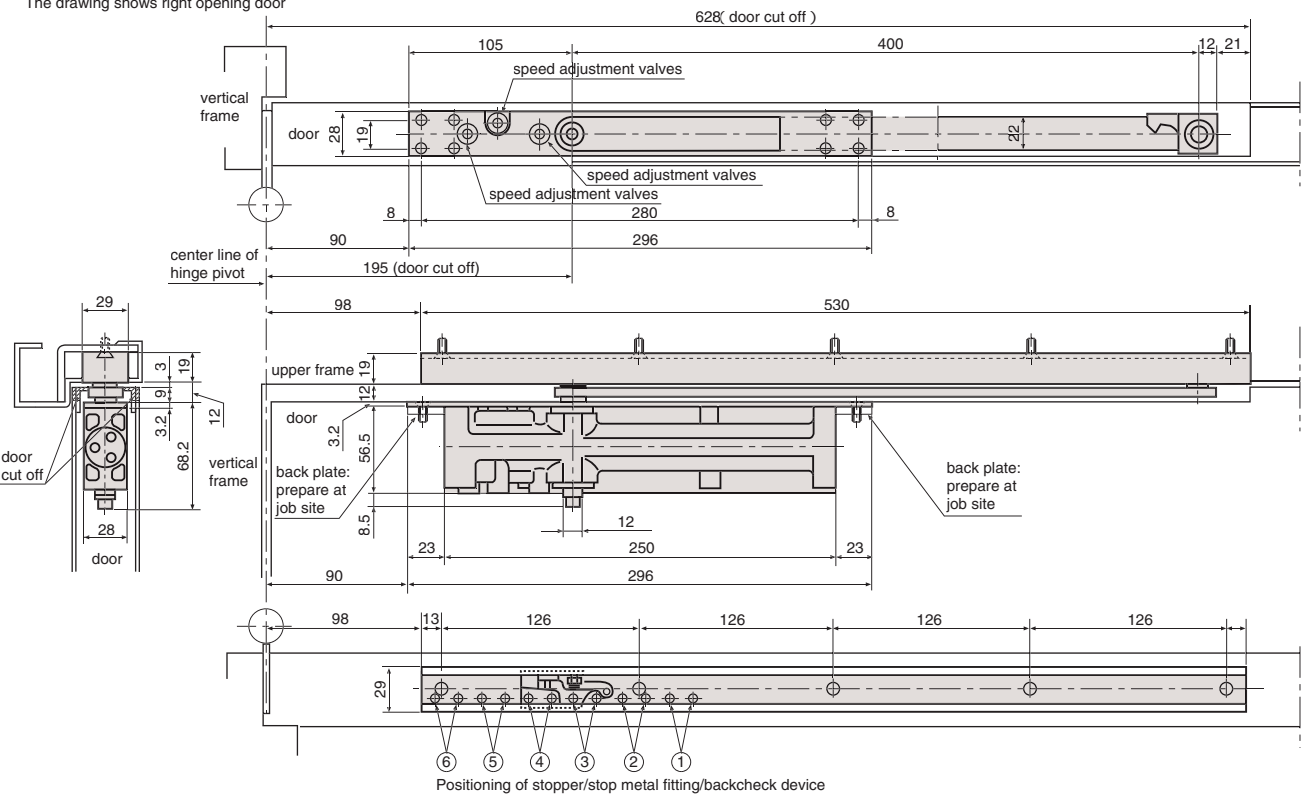


Installation position	Angle of door stop					
	①	②	③	④	⑤	⑥
180° opening	100°	109°	119°	131°	151°	180°

CONCEALED DOOR CLOSERS RYOBI COU-50

Drawing for COU-52/53, 52H/53H

The drawing shows right opening door



Installation position	Angle of door stop / hold open / backcheck					
	①	②	③	④	⑤	⑥
180° opening	99°	108°	117°	130°	149°	180°