

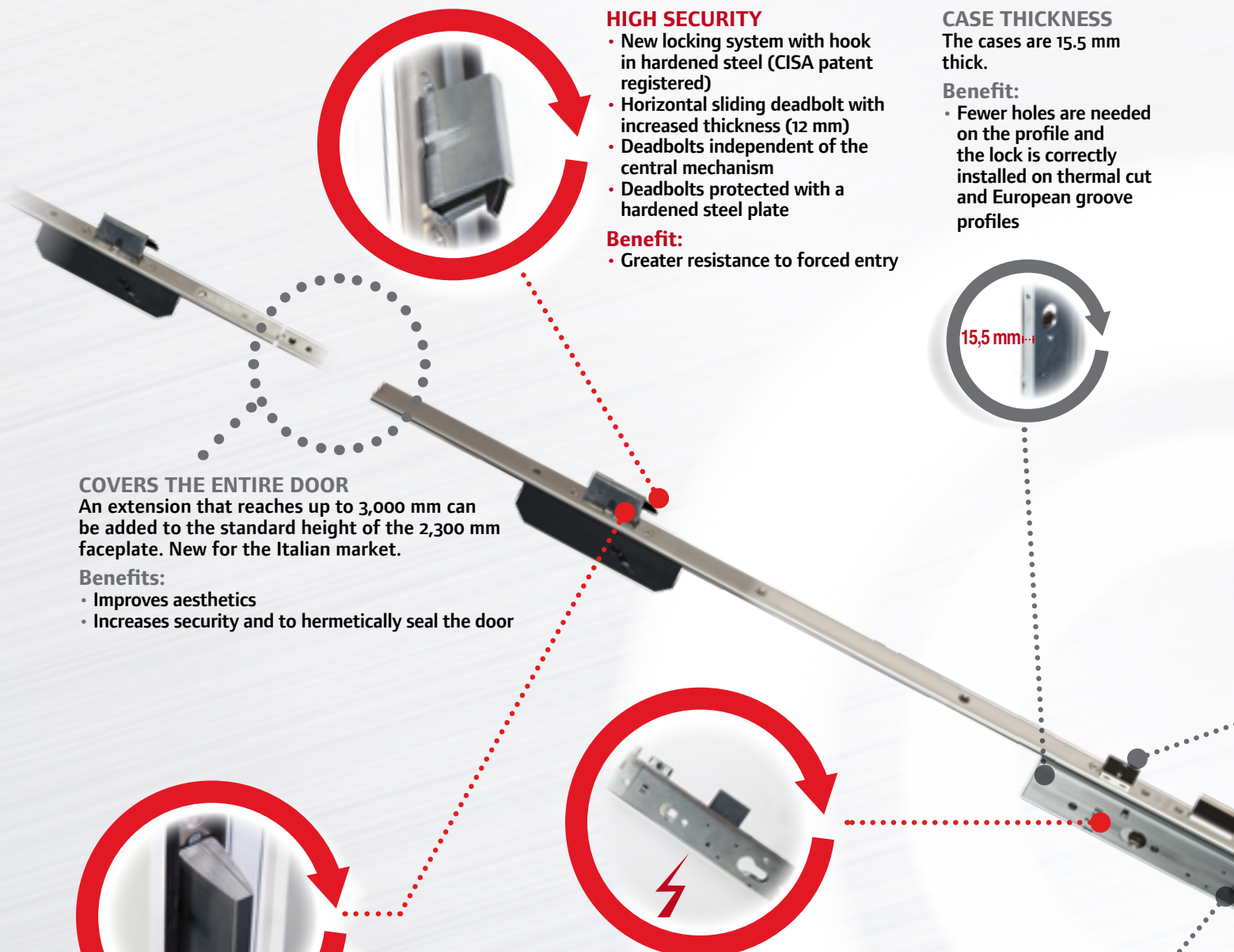


# Multitop PRO

**New gear lock for aluminium doors  
with 15.5 mm thick case**

**Catalogue 2014**





**HIGH SECURITY**

- New locking system with hook in hardened steel (CISA patent registered)
- Horizontal sliding deadbolt with increased thickness (12 mm)
- Deadbolts independent of the central mechanism
- Deadbolts protected with a hardened steel plate

**Benefit:**

- Greater resistance to forced entry

**CASE THICKNESS**

The cases are 15,5 mm thick.

**Benefit:**

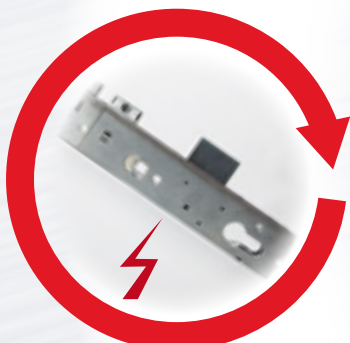
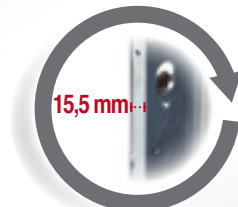
- Fewer holes are needed on the profile and the lock is correctly installed on thermal cut and European groove profiles

**COVERS THE ENTIRE DOOR**

An extension that reaches up to 3,000 mm can be added to the standard height of the 2,300 mm faceplate. New for the Italian market.

**Benefits:**

- Improves aesthetics
- Increases security and to hermetically seal the door



**CORRECTS HEAT DISTORTION**

The "effort reducing" gear mechanism that makes it easier to turn the key, and the 12 mm thick deadbolt with its more rounded design, offer an effective solution to close and secure doors subject to heat distortion.

**Benefits:**

- Hermetic seal increasing the energy savings
- Cuts maintenance times and costs for the installer

**ELECTRIC VERSION**

Multitop Pro series offers a complete range of electric locks with a 15.5 mm thick case (as with the mechanical version) and with a dead-locking device on the latchbolt.

**Benefits:**

- Fewer holes are needed on the profile and the lock is correctly installed on thermal cut and European groove profiles
- Increases security for doors which are locked with the latchbolt only

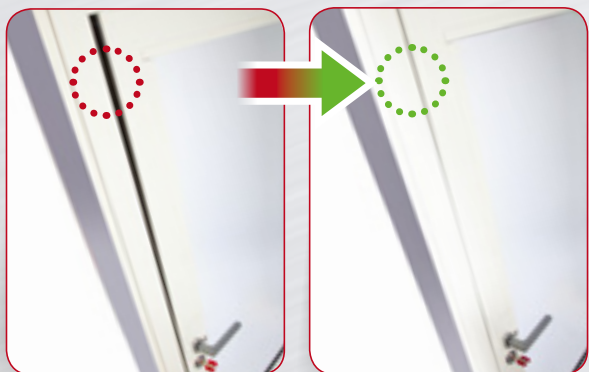


**INTERCHANGEABILITY**

- Completely interchangeable with previously installed versions
- Backsets from 25 to 40 mm
- Highly compact thanks to the distance from the cylinder (15 mm)
- Interasse 85 e 92 mm

**Benefits:**

- No additional work needed on the door
- Cylinder always correctly positioned
- No holes needed on the back part of the profile during installation



# MULTITOP PRO

## Designed to resist.



### INTERCHANGEABLE LATCHBOLT

The CISA Multitop Pro range is available in the latchbolt version.

The following operations are possible:

- Change from latchbolt to roller directly from the lock faceplate (CISA patent registered)
- Insert the latchbolt backwards for the deadbolt only version

#### Benefits:

- Reduced stock
- More flexible adjustments
- The roller can be replaced even when the lock is installed
- No need for additional accessories for the deadbolt only function



### TOTAL PROTECTION

The lock can be fitted with 4th and 5th locking points.

#### Benefit:

- Greater security for two-leaf doors



### CLOSED CASE

The lock and divertors cases are enclosed, including the hooks on the rods.

#### Benefits:

- Dirt and dust cannot get in
- Eliminates the possibility of damage during installation



### FINISHES AVAILABLE

- Faceplate in stainless steel
- Faceplate in black painted stainless steel



## CORRECTS HEAT DISTORTION

The "effort reducing" gear mechanism that makes it easier to turn the key, and the 12 mm thick deadbolt with its more rounded design, offer an effective solution to close and secure doors subject to heat distortion.

## HIGH SECURITY

- New locking system with hook in hardened steel (CISA patent registered)
- Horizontal sliding deadbolt with increased thickness (12 mm)
- Deadbolts independent of the central mechanism
- Deadbolts protected with a hardened steel plate

## ELECTRIC VERSION

Multitop Pro also offers a complete range of electric locks with a 15.5 mm thick case (as with the mechanical version) and with a dead-locking device on the latchbolt.

## INTERCHANGEABILITY

- Completely interchangeable with previously installed versions
- Backsets from 25 to 40 mm
- Highly compact thanks to the distance from the cylinder (15 mm)
- Centre distances 85 and 92 mm

## CERTIFICATION

CISA Multitop Pro is certified:

- Short faceplate version according to the European Standard EN 12209:03:  
Grade 6 Security – 1,000 kg for lateral thrust and 600 kg for front load
- Long faceplate version according to the European Standard prEN 15685:10:  
Grade 6 Security – 1,000 kg for lateral thrust and 600 kg for front load  
Grade 7 Security – like Grade 6 with the use of protective plates 06436 Series

## TECHNICAL FEATURES

- **Case thickness 15.5 mm**
- **Closed case**
- **Backsets 25-30-35-40 mm**
- **Latchbolt interchangeable with roller**
- Case in pressure die-cast metal
- Steel cover
- Top and bottom adjustable faceplate
- Latchbolt adjustable from 11 to 17 mm
- Roller adjustable from 2.5 to 15.5 mm
- Latch and bolt adjustable from 10.5 to 16.5 mm (electric versions)
- Latchbolt with anti-burglary system (electric versions)
- Divertor deadbolts 12 mm thick with 25 mm protrusion
- Protective plate for grade 7 security item 1.06436.10/11.0
- A microswitch can be installed on the divertor case
- 8 mm square spindle
- DIN holes to fix handle rose
- CE 12 V ac voltage (electric versions)

## OPERATION

- The key operates the latchbolt and deadbolts. The remote electric control (electric locks only) and handle operate the latchbolt
- The lock is fitted with an off-phase operating preventing system

## FINISHES

- Zinc-plated cases and covers
- Faceplate in black painted steel and stainless steel
- Latchbolt, roller and deadbolts nickel-plated

## HAND

0 = non-handed

## SUPPLIED AS STANDARD

- Pair of nylon roses item 1.06012.01.0
- Lock and cylinder fixing screws
- Instruction sheet

## ON REQUEST

- **Modular roller assembly item 1.06000.00.0**
- European profile cylinder
- Adjustable metal strike plates (see Vademecum)
- Additional extended bolts for 4th and 5th locking points item 1.06449.10/11.0
- Extension kit up to 3,000 mm item 1.06444.46/56/66/76.0
- External extended bolt coupling pin item 1.06449.05.0
- Protective rose for cylinder item 1.06460.05.0
- Button item 1.06110.10.0 (electric locks)
- Pair of electric contacts item 1.06511.00.0

## About Allegion

Allegion (NYSE: ALLE) creates peace of mind by pioneering safety and security. As a \$2 billion provider of security solutions for homes and businesses, Allegion employs more than 7,800 people and sells products in more than 120 countries across the world. Allegion comprises 23 global brands, including strategic brands CISA®, Interflex®, LCN®, Schlage® and Von Duprin®.

For more, visit [allegion.com](http://allegion.com)

 BRICARD ■ Briton ■  CISA ■  interflex