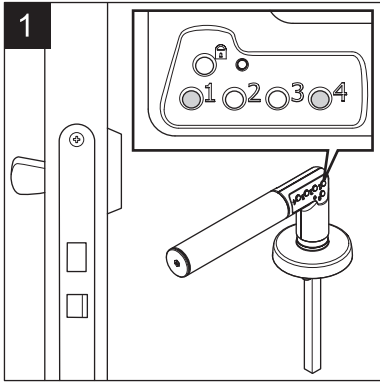


Fitting instruction

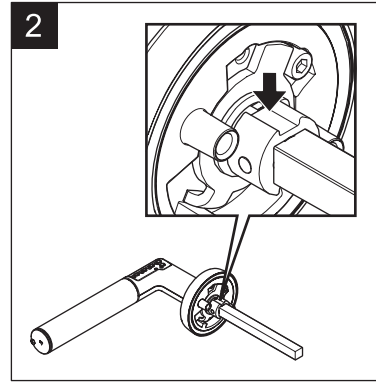


Before fitting

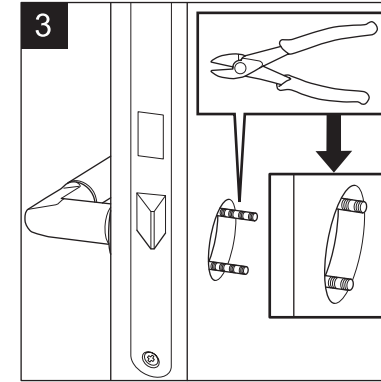
Before fitting the handle to the door, it has to be initiated with an administration code. The handle has no administration code when delivered.

1. Keep the handle horizontal with the spindle pointing down.
2. Press button 1 and 4 at the same time. The led will flash red.
3. Stop pressing the buttons. The green light will stay on constantly.
4. Enter a 6 digit administration code. The light will flash green rapidly. The administration code is valid.

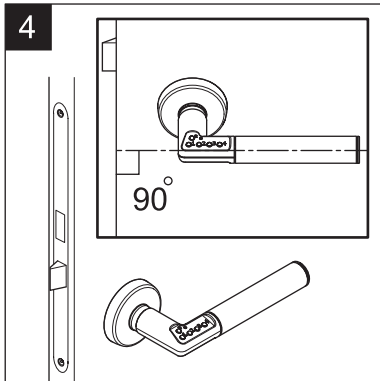
To change administration code, repeat the notes above. N.B. that all user codes will disappear when you change administration code.



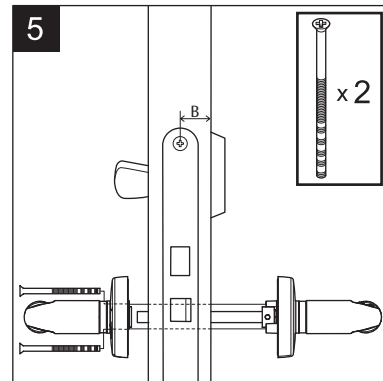
2. Turn the spindle so that the track will point upwards, as shown on the picture. Keep this position when fitting, according to picture 4.



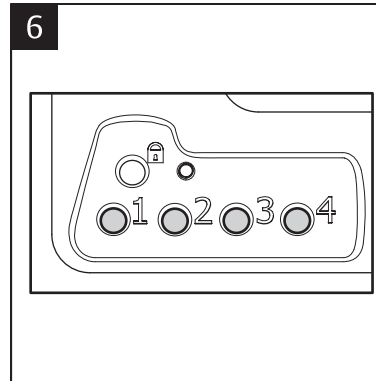
3. Place the inner handle on the door and fit the enclosed screws through the door blade. Cut the screws in the nearest waist on the screw, max 6 mm outside the door-blade. A 22 mm (minimum) hole through the door is needed to accommodate for the cam around the spindle.



4. Fit the outside handle (with keypad) on the door. Make sure to keep the handle horizontal during when fixing.

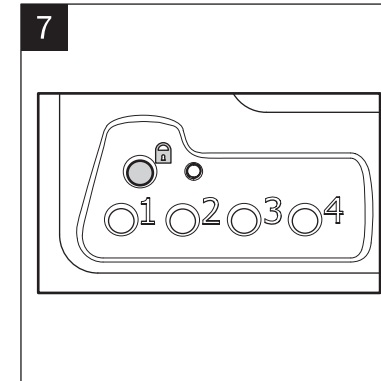


5. Connect the inner- and outer handle with the screws. Be sure to fit the handle correctly, so that both handles rotate back without any problems. The handle fit door thickness of 35-80 mm with a B-measurement (see image 5) of at least 21 mm. For smaller B-measurement down to 14 mm, use distance ring 8820.



- 6.
1. Add at least one user code, see instructions on the opposite side.
 2. Unlock the handle by keying the correct code using the keys 1-4.

If the wrong code is used the light will alter between red and green. (The handle will remain open when the correct code is used provided that auto locking mode has not been selected, see opposite side).



7. Lock the handle by pressing the padlock key.

ASSA ABLOY Code Handle

Fitting- and operating
instruction



ASSA ABLOY

ASSA ABLOY, the global leader
in door opening solutions.

Operating instruction

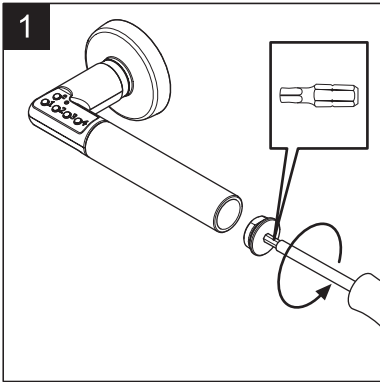
Batteries

ASSA ABLOY Code Handle is supplied with 2 pcs CR2 batteries installed. The lifetime of the batteries should be at least a couple of years depending on number of operation and the effect in the batteries. If the light signals red when pushing down a key it is time to change batteries. The handle will remember all codes during the change.

It is important to choose batteries of good quality when changing. Use CR2 batteries of well known brand.

When changing batteries follow the instruction on image 1-3 and follow necessary safety precautions:

- Install the batteries correctly, see image 2. Be aware of the polarity
- Do not mix used and new batteries. Do not mix different brands.
- Change both batteries at the same time
- Do not incinerate batteries.
- Properly dispose of used batteries
- Do not leave them within the reach of children.



1. Unscrew the battery cover with the enclosed security bits.

Security

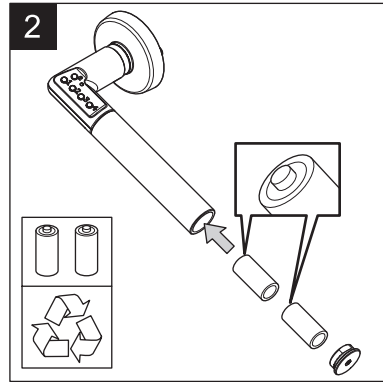
If a wrong code is entered five times the handle is locked-out for 3 minutes and the light will flash red every five seconds. To pass the lock-out, enter the correct code twice and then once more to gain access.

User codes

ASSA ABLOY Code Handle has room for 9 different user codes which can be programmed by use of the selected administrator code.

Add or change a code in the memory:

1. Press the padlock key until a red, steady light appears.
2. Enter the administration code within 5 sec. The light shines green.
3. To store the code in one of the 9 memory positions use key number 1 and press the number of times corresponding to selected memory position; one press for memory position 1 and two presses for memory position 2 etc.
4. Wait until a green, steady light appears.
5. Enter the new user code, consisting of 4, 5 or 6 digits.

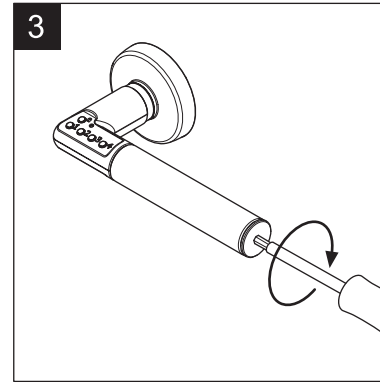


2. Press the handle down and let the two batteries fall out. Fit two new batteries. Be sure to fit them in correct position.

6. Press the padlock key to confirm or wait until the green light is turned off.
7. More user codes can be stored on the remaining memory positions. Follow the instructions above and store according to point 3.

Delete a code from memory:

1. Press the padlock key until a red, steady light appears.
2. Enter the administration code within 5 sec. The light shines green.
3. Select which one of the 9 memory positions to be deleted by pressing key number 1 the required number of times; one time for memory position 1 and two times for memory position 2 etc.
4. Wait until a green, steady light appears.
5. Delete by pressing the pad lock key. The light shines red and the selected memory place is now deleted.
6. To delete more memory positions repeat the instruction above and indicate corresponding memory position by following instructions in point no 3.



3. Replace the battery cover.

Sound signal

The handle is delivered with the sound signal on and can be turned off/on as follows:

1. Press the padlock key until a red, steady light appears.
2. Enter the administration code within 5 sek. The light shines green.
3. Press one time on key number 2 to turn off/turn on the sound. A weak signal indicates that the sound is off and a strong double signal indicates that the sound is on.
4. Press the padlock key to confirm or wait until the green light is turned off

Automatic locking

The handle is delivered in manual mode. Automatic locking within 9 sec after correct code is keyed can be selected provided that the handle is back in horizontal position within this time.

To change mode follow the instructions below:

1. Press the padlock key until a red, steady light appears.
2. Enter the administration code within 5 sec. The light shines green.
3. Press one time on key number 3 to change the mode to/from automatic locking.
4. Press the pad-lock key to confirm the change or wait until the green light stops.

Temporary leave open function when in automatic locking mode

Key the correct user code and directly after the light stops flashing, press button 1 and 4 at the same time. The door is now left unlocked until the next time either the lock button or the user code is keyed, where after it goes back into automatic locking mode.

Memory reset

The handle can be reset back to factory settings by changing the administrator code. (Read before fitting, opposite side)

The handle is supplied as:

- No user code set
- Sound signal on
- Auto-lock off

DOCUMENT THE CODES

Store safety

Administration code:

Code _____

User codes:

Code 1 _____

Code 2 _____

Code 3 _____

Code 4 _____

Code 5 _____

Code 6 _____

Code 7 _____

Code 8 _____

Code 9 _____

ASSA ABLOY

ASSA ABLOY, the global leader in door opening solutions.