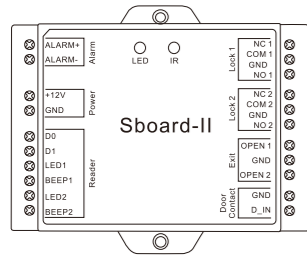


WiFi Controller (For Android)



User Manual

INTRODUCTION

Once you purchase and install a WiFi Controller in your home or office, you can take advantage of our exclusive smart home APP. Install the APP on your smartphone or tablet which allows you remotely opening the door within your home network or tablet. It supports multiple smartphone or tablet on line at the same time, all the smartphone or tablets share the same account and password.

APP Operation

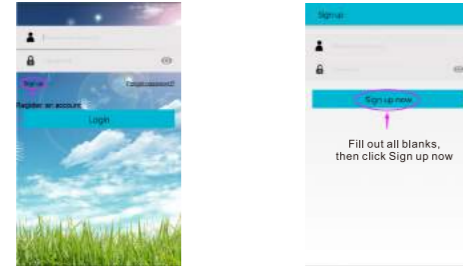
Here are just a few steps to get you started.
(1) Make sure Wifi work on your smartphone or tablet, and connects to the network.

(2) Download free App



1.Register

(Make sure the registered mailbox is legal and valid, so that you can recover your password once forgotten. Only mailbox can be registered)



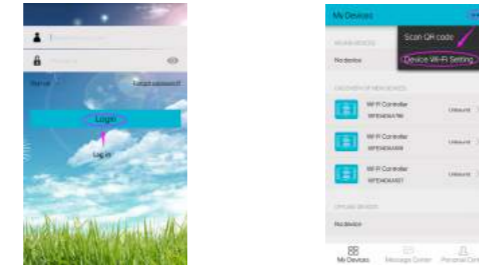
-01-

2.Device Wi-Fi setting

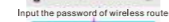
Remove the back cover of WiFi Controller and power on. You will see the green light of "WiFi LED" alternately on and off all the time, it means the controller didn't connect with wireless router.

Below steps are just for Masters, each device has only one Master, others are common users

Login the APP with your email address and password



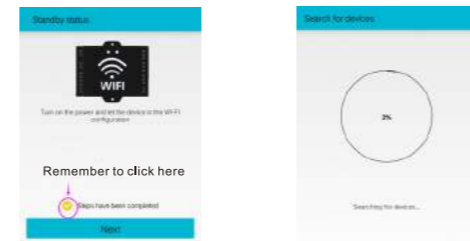
Input the password of wireless router, and then click next.
(Remark: The APP will connect to a nearest wireless network automatically)



-02-

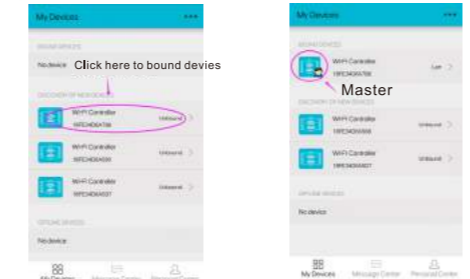
Match the WiFi Controller with the smart home APP.

Press the SW14(Configure/Reset) for 5 seconds, until the green light of "WiFi LED" flashes quickly, then WiFi Controller gets into Communication Setup Mode.



3. Bind the device

(Notice: The first user added to the device is Master)

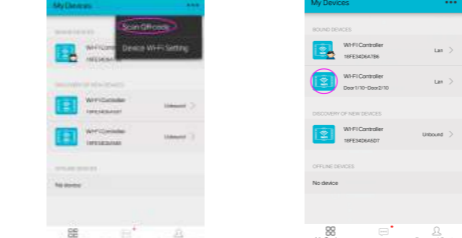


-03-

4.Add common users

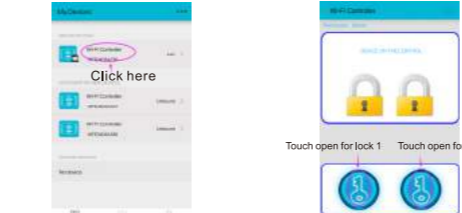
(1) Scan QR Code to add common user.
Because only Master can generate a QR Code, here the QR Code is generated by another Master.

(Please refer to Page 8 to check how to generate a QR Code)



(2) The Master shares devices to add common user.
(For detailed operation, please refer to Page 8-Step 8)

5.Control the door



-04-

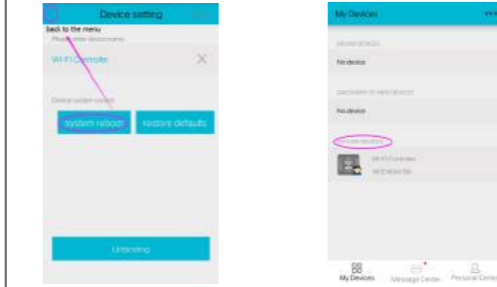
6.Device setting

(1) Rename the device



(2) System reboot

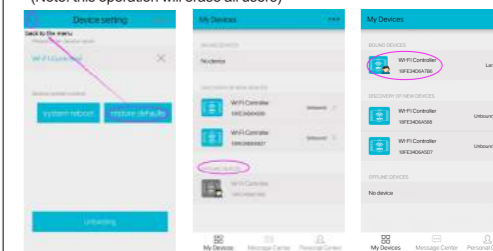
System reboot means wireless router reboot. After about 1 minute, the device will be in a state of offline and will be online automatically.



-05-

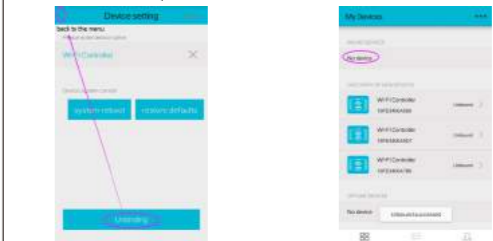
(3) Restore defaults

After restore defaults, the device will be in a state of offline. Then operate following Step 2 & 3 in Page 3 to add device
(Note: this operation will erase all users)



(4) Unbinding the device

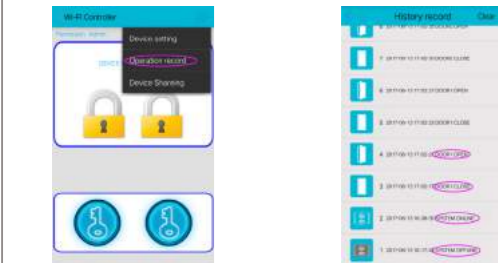
Note: If Master unbind the device, all users can't open the door; if common users unbind the device, it only unbinded himself, won't limit other users' operation.



-06-

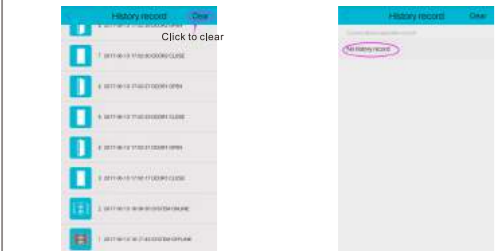
7.Operation record

Operation record will show OPEN/CLOSE record & ONLINE/OFFLINE record



Clear all record

Remark: Only Master can clear all the records, a common user has no right to clear records. And Master can check all the operation records (only open/close time), including records of common users.



-07-

8.Device sharing

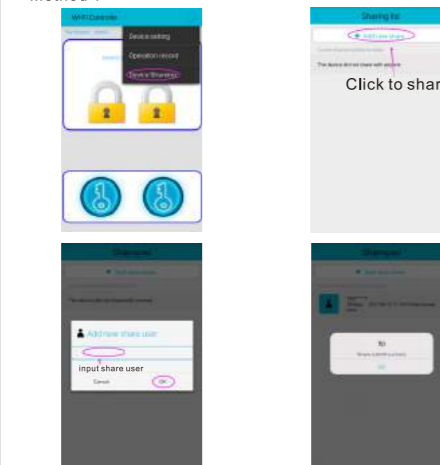
Remark: 1.Only Master has the right to share devices.

2.All sharing by user account needs to be accepted by receivers, then the sharing is valid.

Share by user account

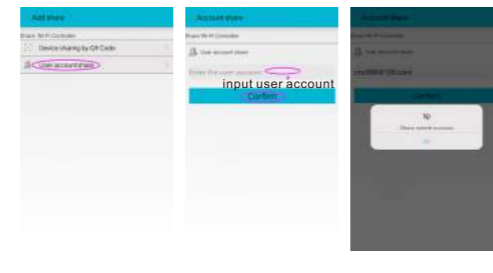
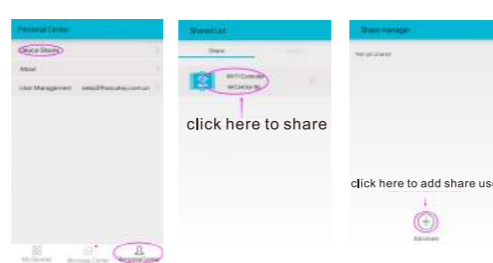
The authority is permanent. You can share to your family or colleague who need to open the door daily.
(The user account shared must have registered in smarhome firstly)

Method 1



-08-

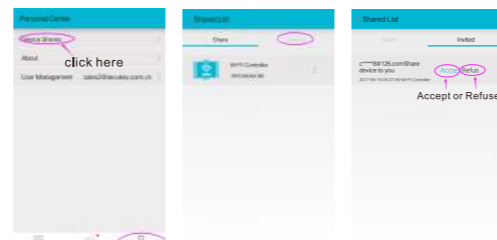
Method 2



-09-

Accept / Refuse sharing

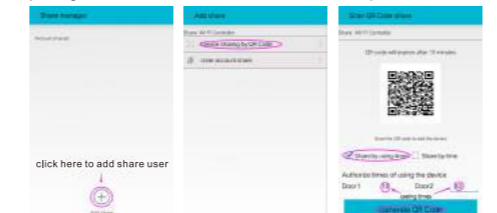
This step is only applied to sharing by user account.



Share by QR Code

The authority is limited by using times or time. You can share to your guests who do not usually visit you.
(Generate QR Code by using times)

For example, when you share the device by setting 10 times, after opening the door for 10 times, he is forbidden to open the door.



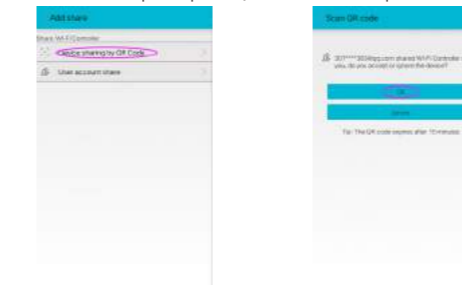
-10-

Scan QR Code



(Generate QR Code by time)

For example, when you share the device by setting valid time, once the time period passed, he is forbidden to open the door.

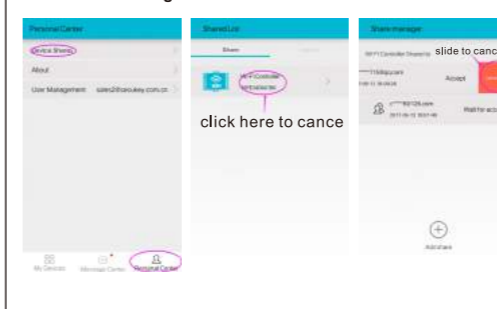


-11-

Scan QR Code share

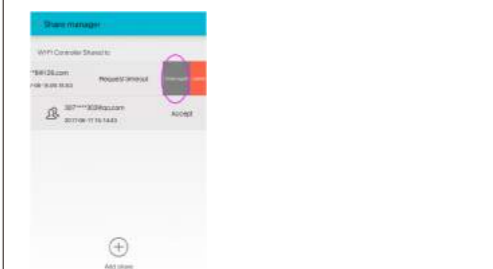


9.Cancel sharing



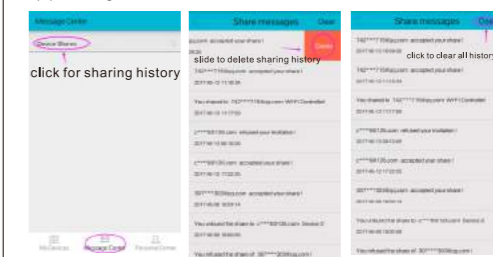
-12-

When you share by QR Code (generate QR code by time), and the other didn't accept your sharing during the time period, you can share again to him directly.



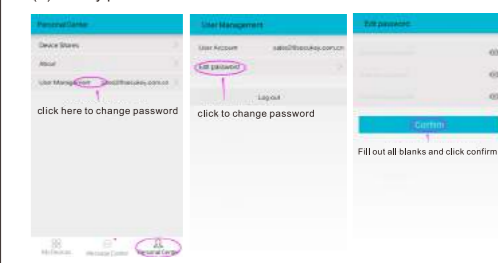
10.Others

(1) Message center



-13-

(2) Modify password



(3) Reset to Factory Defaults

Press the SW14(Configure/Reset) for 10 seconds, until the green light of "WiFi LED" is on all the time, then the WiFi Controller has been reset to factory default.

-14-